



Openspace T8 LED Tube Series

Features

- 5 Year Warranty
- CE & TUV Certified
- L70 to 50,000 Hrs
- 120 Degree Beam Angle
- RoHS Compliant
- 180 Rotating End Caps

Benefits

- Up To 50% Energy Savings
- Zero Maintenance
- Improved Light Quality

Typical Applications

- Offices
- Schools
- Hospitals
- Corridors
- Commercial Buildings
- Colleges
- Universities
- Car Parks
- Warehouses
- Industrial Buildings



- Ideal T8 LED Retrofit Solution.
- L70 Rated to 50,000 hours.
- 180 Rotating End Caps
- Fully CE Certified
- 120 Degree Beam Angle
- Up To 4320 Lumens

The Di-Astrum Openspace T8 LED Tube is an ideal straight swap solution for existing fluorescent T8 tubes. These economic, lightweight, LED fittings are available in various sizes and options making them an ideal solution for a wide variety of applications. These IP20 tubes are constructed using an Aluminium Profile for greater heat management and PMMA diffuser and offered with Frosted Lens as standard to reduce glare. These products are L70 rated to 50,000 hours and are offered with a 5 Year Warranty. Please note that electronic ballast will need to be by passed by a qualified electrician.

Electrical Information

Nominal Wattage	11-36W
Drive Current	N/A
Operating Temp	-20 °C to +40 °C
Power Factor	> 0.95
THD	< 20%
Input Voltage	220-240 VAC
CRI	>80
CCT	4000K

Mechanical Information

Size	600 – 2400mm
Weight	154 – 501g
Mounting	G13 Base
IP Rating	IP20
IK Rating	IK01
Housing	Aluminium / Plastic
Diffuser	PMMA

Ordering Information

Part Number	Wattage	Lumen Output	CCT / Colour Temperature
DA-OPN-T806-11W-40K-FC	11W	1320	4000K / Neutral White
DA-OPN-T812-20W-40K-FC	20W	2600	4000K / Neutral White
DA-OPN-T815-24W-40K-FC	24W	3120	4000K / Neutral White
DA-OPN-T816-30W-40K-FC	30W	3600	4000K / Neutral White
DA-OPN-T824-36W-40K-FC	36W	4320	4000K / Neutral White



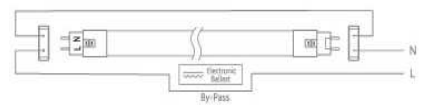
Installation Instructions

1. Installation For Magnietic Ballast



ATTENTION Just replace starter with fuse for retrofit only suitable for batterns with magnetic ballast, not electronic ballast

2. Installation For Electronic Ballast



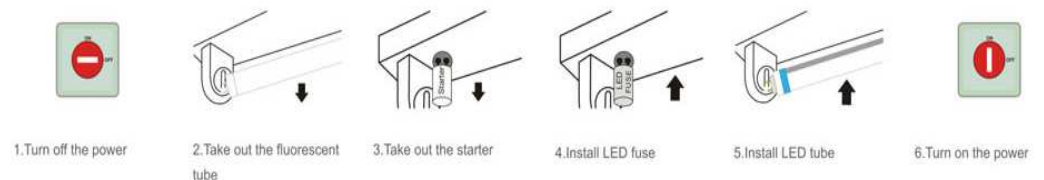
ATTENTION Electronic ballast must be by-passed by a registered electrician

3. Installation For Rewiring



ATTENTION Before installation please make sure the power is turner off.

4. Installation Step for Magnetic Ballast



Features

- 5 Year Warranty
- CE & TUV Certified
- L70 to 50,000 Hrs
- 120 Degree Beam Angle
- RoHS Compliant
- 180 Rotating End Caps

Benefits

- Up To 50% Energy Savings
- Zero Maintenance
- Improved Light Quality

Typical Applications

- Offices
- Schools
- Hospitals
- Corridors
- Commercial Buildings
- Colleges
- Universities
- Car Parks
- Warehouses
- Industrial Buildings