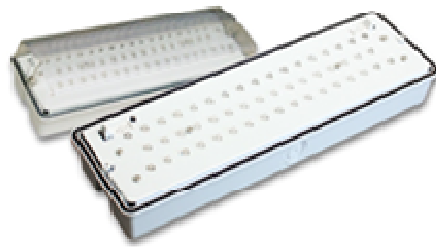




# Juniper LED Emergency Bulkhead



Ideal for Corridors and Exit Routes

IP65

3 Hrs Operating After Mains Power Failure

1 Year Warranty

## Features

- 3Hr Maintained
- IP20
- 1 Year Warranty
- Additional Legends Available

## Benefits

- Up To 50% Energy Savings
- Zero Maintenance
- Improved Light Quality

## Typical Applications

- Corridors
- Exits
- Escape Routes
- Offices
- Schools
- Hospitals
- Corridors
- Commercial Buildings
- Colleges
- Universities
- Industrial Buildings
- Factories
- Manufacturing Facilities
- Warehouses
- Stairwells
- Store Rooms
- Workshops
- Garages
- Circulation Areas

The Di-Astrum Juniper LED Emergency Bulkhead is a cost effective emergency solution ideal for corridors, exits and escape routes. This IP65 fitting consumes just 6W and comes in 3 hrs maintained (M) and non-maintained (NM) versions. Constructed of polycarbonate housing and diffuser, this product utilizes 3.6V 2000mAh NiCd batteries to provide up to 3 hours operation on battery power after mains power failure. This Emergency Bulkhead is offered a 1 year warranty.

## Electrical Information

Nominal Wattage	<b>6W</b>
Operating Temp	<b>-20 °C to + 35 °C</b>
Power Factor	<b>&gt; 0.95</b>
THD	<b>&lt; 20%</b>
Input Voltage	<b>110-277 VAC</b>
CRI	<b>70</b>
CCT	<b>6500K</b>

## Mechanical Information

Dimensions	<b>352 x 110 x 65mm</b>
Mounting	<b>Surface Mount</b>
IP Rating	<b>IP65</b>
Housing	<b>Polycarbonate</b>
Diffuser	<b>Polycarbonate</b>

## Ordering Information

Part Number	Wattage	Lumens	Dimensions
<b>DA-JUN-EMBH-MT-6W-50K</b>	<b>6W</b>	<b>190</b>	<b>352 x 110 x 65mm</b>
<b>DA-JUN-EMBH-NM-6W-50K</b>	<b>6W</b>	<b>190</b>	<b>352 x 110 x 65mm</b>

## Additional Options

<b>Additional Legend Kit (4 Pack)</b>	<b>DA-JUN-EMBH-LGD-KIT</b>
---------------------------------------	----------------------------