

# LEDway® Multi

IP66 Street Light – Mounting M – FS (Petroleum Canopy)

## Product Description

Luminaire housing is all aluminum construction. All components are mercury free and recyclable. Sharp profile for low wind exposure. Tooless entry. Mechanically solid and with an extremely strong build, this fixture is the ideal solution for industrial applications. The various different mounting systems available make this fixture extremely versatile and ideal for ceiling, busway and wall mounting installations.

## Performance Summary

Utilizes BetaLED® Technology

Patented NanoOptic® Product Technology

**CRI:** Minimum 70 CRI

**CCT:** 5700K (+/- 500K) Standard, 4000K (+/- 300K)

### Warranty†:

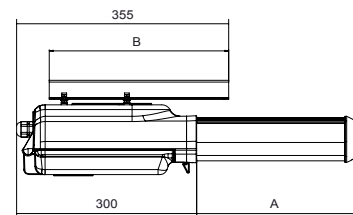
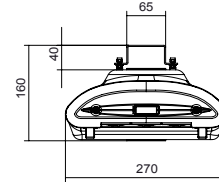
Class 1 - 10 years on luminaire/10 years on Colorfast DeltaGuard® finish

Class 2 - 5 years on luminaire/10 years on Colorfast DeltaGuard® finish

## Accessories and available mounting systems

### Field Installed Accessories

<b>BRDSPK30</b> Bird Spikes for Light Engine, 20-30 LEDs	<b>PM-MLW</b> Mounting for ceiling applications. Configured for busway mounting (M6 bolts) 20-60 LEDs
<b>BRDSPK60</b> Bird Spikes for Light Engine, 40-60 LEDs	<b>PM-MLLW</b> Mounting for ceiling applications. Configured for busway mounting (M6 bolts) 80-120 LEDs
<b>BRDSPK120</b> Bird Spikes for Light Engine, 80-120 LEDs	



LED Count	Dimension "A"	Dimension "B"	Weight
20	156mm	300mm	7,52kg
30	156mm	300mm	7,92kg
40	270mm	300mm	9,22kg
50	270mm	300mm	10,42kg
60	270mm	300mm	10,52kg
80	552mm	600mm	14,72kg
90	552mm	600mm	14,82kg
100	552mm	600mm	14,92kg
110	552mm	600mm	15,02kg
120	552mm	600mm	15,12kg

## Ordering Information

Example: LXDFSM02EGSVI5

L	X	D	FS	M	O2	E	G	SV	I5
Product	Insulation Class	Model	Optic	Mounting	LED Count (x10)	Version	Options <i>(consult company for available options)</i>	Color Options*	Drive Current
<b>LEDway</b>	<b>X</b> Class 1  <b>Y</b> Class 2	<b>D</b> Multi	<b>FS</b> (Petroleum Canopy)	<b>M</b> (configuration for ceiling and busway mounting)	<b>02</b> <b>03</b> <b>04</b> <b>05</b> <b>06</b> <b>08</b> <b>09</b> <b>10</b> <b>11</b> <b>12</b>	<b>E</b>	<b>No code 5700K</b> <b>43 4000K</b> <b>K# Light Control with Occupancy Sensor**</b> - Flux dimming control with occupancy sensor <b>D# Power Line Communication System (PLC)</b> - Power line control system with dimmable driver <b>G# Bi-Level Control</b> - Two distinct power levels, High/Low <b>D Dimmable Driver</b> - Dimmable driver 1-10V with external controller <b>S# Virtual Midnight</b> - Two levels option with virtual midnight - Available up to 100 LEDs in class 1 - Available up to 60 LEDs in class 2 <b>T# Reprogrammable Virtual Midnight</b> - Reprogrammable 2 levels option with virtual midnight <b>R# Flux Dimming</b> - Integral dimming system with plants including flux regulators - Available up to 100 LEDs in class 1 - Available from 80 to 120 LEDs in class 2	<b>SV</b> Silver (Standard)  <b>BK</b> Black  <b>BZ</b> Bronze  <b>SB</b> Silver Bronze  <b>WH</b> White	<b>No Code</b> 700mA  <b>I5</b> 525mA  <b>I3</b> 350mA

\* Light engine portion of extrusion is not painted and will remain natural aluminum regardless of color selection

† See [www.cree-europe.com](http://www.cree-europe.com) for warranty terms

\*\* Not available in Class 2



Rev. Date: 14 March 2014



**Product Specifications**

**BETALED® TECHNOLOGY**

LEDway® Multi luminaires are powered by BetaLED® Technology delivering outstanding illumination, lasting performance and optimum energy efficiency. Patented NanoOptic® technology optimizes target illumination, performance and offers flexibility with multiple optic choices. NanoOptic compliant with light pollution and photobiological safety standards.

**CONSTRUCTION & MATERIALS**

- Housing is all aluminum construction
- Designed with 1-10V dimming capabilities. Controls by others
- Available mounting systems:
  - PM-MLW mounting for ceiling applications. Configured for busway mounting (M6 bolts) 20-60 LEDs
  - PM-MLLW mounting for ceiling applications. Configured for busway mounting (M6 bolts) 80-120 LEDs
- Exclusive Colorfast DeltaGuard® finish features an E-Coat epoxy primer with an ultradurable powder topcoat, providing excellent resistance to corrosion, ultraviolet degradation and abrasion. Standard is Silver. Bronze, Black, White, and Silver Bronze are also available

**ELECTRICAL SYSTEM**

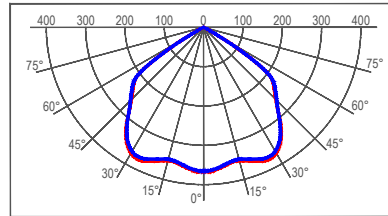
- **Input Voltage:** 220 - 240Vac (capable 120-277Vac, please consult company for available configurations) 50/60Hz
- **Power Factor:** > 0.9 at full load
- **Total Harmonic Distortion:** < 20% at full load

**REGULATORY & VOLUNTARY QUALIFICATIONS**

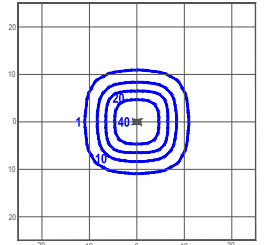
- CE Listed
- ENEC Listed only for class II
- Enclosure rated IP66 per IEC 60529
- 10kV surge suppression protection tested in accordance with IEEE/ANSI C62.41.2, for Class 1 only
- Luminaire and finish are endurance tested to withstand 5,000 hours of elevated ambient salt fog as defined in ASTM Standard B 117
- RoHS Compliant

**Photometry**

All published luminaire photometric testing performed to IESNA LM-79-08 standards by a NVLAP certified laboratory.



cd/klm  
 — CO - C180 — C90 - C270



lux

ITL Test Report #: 76940

LXDFSM04E43  
 Mounting Height: 6m  
 Initial Delivered Lumens: 4527

**IES Files**

To obtain an IES file specific to your project, please consult [www.cree-europe.com](http://www.cree-europe.com)

**Lumen Output, Electrical, and Lumen Maintenance Data**

Effective Flux (lm) - FS Distribution								
LED Count (x10)	5700K	4000K	System Watts 220-240V	Total Current (A)	50K Hours Projected Lumen Maintenance Factor @ 15°C (59°F)	L <sub>70</sub> Life* (hours)		
	Delivered Lumens	Delivered Lumens		230V				
<b>350mA @ 25°C (77°F)</b>								
02	2557	2480	25	0.13	94%	>150000		
03	3835	3721	35	0.17				
04	5114	4961	46	0.21				
05	6392	6201	56	0.27				
06	7670	7441	66	0.31				
08	10227	9922	89	0.42				
09	11506	11162	99	0.46				
10	12784	12402	108	0.52				
11	14062	13643	117	0.58				
12	15341	14883	126	0.62				
<b>525mA @ 25°C (77°F)</b>								
02	3682	3572	37	0.17			93%	149000
03	5523	5358	52	0.24				
04	7364	7144	70	0.30				
05	9204	8930	86	0.39				
06	11045	10716	99	0.45				
08	14727	14288	141	0.59				
09	16568	16073	157	0.65				
10	18409	17859	172	0.74				
11	20250	19645	187	0.83				
12	22091	21431	203	0.89				
<b>700mA @ 25°C (77°F)</b>								
02	4666	4527	49	0.23	91%	129000		
03	6999	6790	70	0.32				
04	9332	9054	91	0.40				
05	11665	11317	112	0.52				
06	13998	13581	132	0.60				
08	18665	18107	183	0.79				
09	20998	20371	203	0.86				
10	23331	22634	224	1.02				
11	25664	24898	243	1.12				
12	27997	27161	264	1.26				

\* Based on fixture operating at 25°C

